

MILTON PARC CITIZENS' COMMITTEE

MARCH 2023

ANNUAL REPORT



WWW.CCMP-MPCC.COM

COMITÉ DES CITOYEN(N)S
MILTON PARC
CITIZENS' COMMITTEE

TABLE OF CONTENTS

WHO WE ARE	3
OUR BUILDING	
3516 PARC COMMUNITY CENTRE	5
LIBRARY	6
EVENTS & EDUCATION	
POPULAR EDUCATION: STARCAP	7
FOOD & ECOLOGY	
LUCIA KOWALUK PARK.....	8
URBAN AGRICULTURE	9
FOOD BANK	10
BAR MILTON PARC	11
HOUSING & URBAN DEVELOPMENT	
HÔTEL-DIEU HOSPITAL.....	12
ROYAL VICTORIA HOSPITAL.....	12
THE TENANTS' UNION.....	13
HOMELESSNESS	
HOMELESSNESS.....	14
COMM-UN.....	15
RENEWING THE CCMP	
DAY OF REFLECTION	16
ADVISORY BOARD	16
FINANCES	17
PARTICIPATION	18

REPORT CONTRIBUTORS

WRITTEN CONTENT AND IMAGES: VARIOUS MEMBERS

EDITORS: NATHAN MCDONNELL, ELAINE MA **TRANSLATION:** BEATRICE GRANDHAY

DESIGN: JESSICA CABANA, AL HANYOK, ELAINE MA



WHO WE ARE

The MPCC is a membership-based, non-profit, and non-partisan organization, made up of up to 200 members and supporters who aim to encourage and contribute to the creation of participatory democracy and collective autonomy. The Milton Parc neighbourhood is bounded by Sherbrooke Street, University Street, Avenue des Pins and Saint-Laurent Boulevard.

BOARD OF DIRECTORS

Our Board is made up of the following members, all of whom live in the neighbourhood and are involved in a variety of our projects. Our monthly board meetings are open to our membership.

Tess Cameron

SLAM, Library, HR

Salvatore Moscato

Secretary, BMP

Eryn Trudell

HR committee

Samuel Helguero

President, SLAM, Library

Nathan McDonnell

Community Organizer,
Building Manager, HR,
Finances, BMP

Jeff Helberg

Treasurer, BMP, Food Bank

Talya Hope Diner

Vice President, HR,
Community Gardens

Marcus Peters

BMP

TEAM

Our staff: This past year, there were several positions funded by Canada Summer Jobs: Talya Hope (gardens), Tess Cameron (library), and Iman Khailat (building management). We have had several contractors help with work on the building, including interior designer Morgane, carpenters Douglas, Alvaro, Wawa, our concierge Chantal, and handyman Mike. Elaine Ma was hired on a Katimavik wage subsidy to do admin, communications, and organizing, and she will continue over the summer as she has been so helpful! Nathan McDonnell is our multifaceted community organizer, doing mobilization, liaison, and communications, as well as building management and finances. Thanks to many others who did small contracts here and there!

Our volunteers: Thanks to our **84 volunteers**, who have collectively contributed 11,044 hours over the past 12 months. If it was paid at \$18/hour, **this volunteer labour would be worth \$198,806.**

A huge thanks to all the people who were involved at the CCMP this past year!



OUR BUILDING

LUCIA KOWALUK CENTRE, 3516 PARC BY NATHAN MCDONNELL



We have leased 3516 Parc (the former Urban Ecology Centre) to develop a community hub for the Cooperative Republic of Milton Parc! We host a community library, a rooftop garden, a meeting space (for up to 20 people), and constant connections and collaborations!

Our tenants include the documentary streaming cooperative [Tenk.ca](https://tenk.ca), landscape architect cooperative [les Mille Lieux](https://lesmillelieux.com), student activist group [QPIRG McGill](https://qpirg.mcgill.ca), homelessness empowerment group [Comm-Un](https://comm-un.org), tenant rights organization [ACORN](https://acorn.ca), the Centre for Collective Action, the [Montreal Autonomous Tenants' Union](https://montrealautonomous.org), socially engaged youth publisher [Kata Éditeur](https://kataediteur.com), and [Mama Dances](https://mamadances.com). Surpluses from sub-leasing the building are reinvested into the community through our various projects. We have also invested \$27,000 into building renovations and improvements, funded by two grants.

Our common room is available for meetings and events (we offer it by donation), and has been used by many community groups, housing coops, and activist groups. We also have affordable office space available for rent. [See photos of the building here](#). Contact us for more information!

COMMUNITY LIBRARY

BY CHLOE



The CCMP is home to a vibrant community library, stacked with volumes of history, philosophy, political texts, novels and poetry. The library seeks to be a community space to build relationships and introduce people to the CCMP and organizing that is being done here, and aims to expand its impact with an incoming seed library, community events, and reading groups. Over 30 volunteers are involved in this project, with a core group of 10 staffing the majority of hours, and has welcomed hundreds of neighbours, community members, and students to browse and chat about literature and politics. **Thanks to all the neighbours who donated books!**



Please come by and check out some books during any of our open hours, we'd love to see you there. The community library is open **3–7pm on Tuesday, Wednesday, and Thursday**, and from **12–4pm on Sunday**. No membership necessary, flexible return dates. To get in touch, find out more, or sign up as a volunteer, please reach out to Tess at (514) 448-7255.



EVENTS & EDUCATION

POPULAR EDUCATION

BY NICOLAS CHEVALIER

In collaboration with [SEIZE](#), we've started a study circle around the massive online open course (MOOC): "Toward Co-operative Commonwealth: Transition in a Perilous Century." The online course is low commitment (around 2 hours/week) and covers topics such as ecological food systems, democratizing social care, and transitioning towards energy democracy. Every three weeks until June, we organize dinner discussions in Bar Milton Parc, with speakers from local organizations, systems thinking, and visual learning like short videos. The dinner discussions are attended by a diversity of people, including folks from the Milton Park land trust and you can still join them!

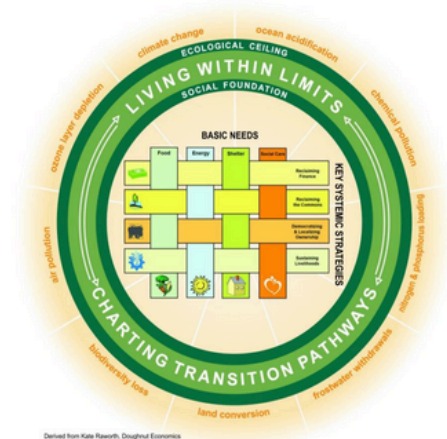


Towards Co-operative Commonwealth: Transition in a Perilous Century

Transformative learning for changemakers everywhere

Open, On-Line, Interactive, and Free. Accessible from Anywhere on the Net

January 29 - June 24, 2023



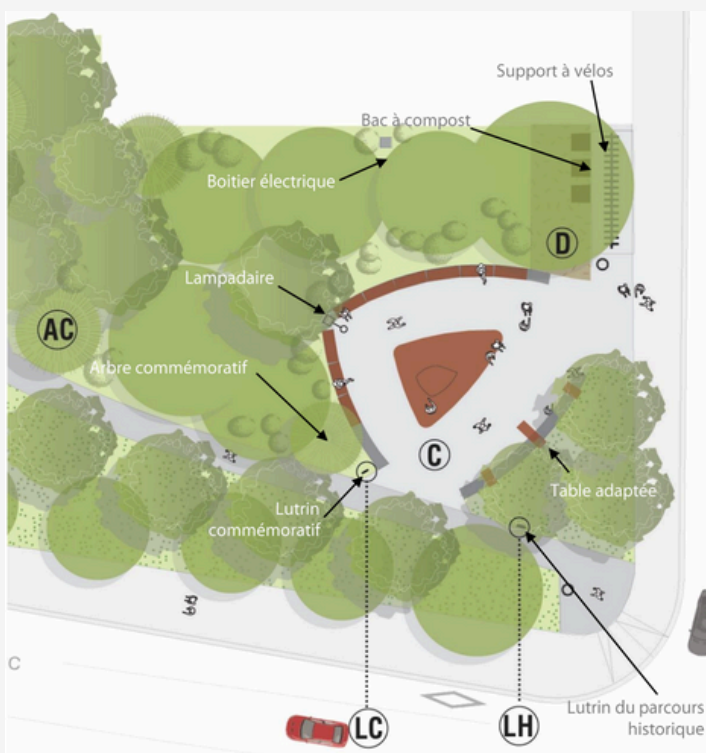
In order to turn ideas into action, in the second half of the year, we will be supporting participants to create transformative initiatives according to their interests, and we'll be providing at least \$3000 in seed funding to help them do this. Thanks to the work of the Synergia Institute and Athabasca University and the support of the Canadian Community Economic Development Network.

Contact us:
talya.hope@solidarityeconomy.ca.

FOOD & ECOLOGY

LUCIA KOWALUK PARK BY DIMITRI ROUSSOPOULOS

In the early 2000s, the CCMP (led by Lucia) saved this green space from a high-rise development; in 2019, with a petition of 1,100 signatures from door-to-door mobilization, we again saved the space by pushing the borough to rezone it as a park and, after Lucia's passing, to name it in her honor. Now, the provincial Ministry of Culture and the Heritage Commission of the City of Montreal have approved the borough's landscaping plans for the park. The plans incorporated feedback from a community survey, the CCMP, and Dimitri Roussopoulos, her life partner and political collaborator.



The borough will install pathways, seating, a drinking fountain, a mini-library, and commemorative signs. There will also be a Speakers Corner/agora which will host citizen meetings, debates, and other educational and community events. Finally, the borough will plant more trees, including a white pine to commemorate Indigenous presence on this land. The landscaping is scheduled to start this spring, and will be synchronized with the completion of the street work on Avenue des Pins.

URBAN AGRICULTURE

BY TALYA HOPE

The CCMP's community gardens had another successful year full of free educational workshops, tours, and community gardening! In addition to the Toit Vert Solidaire, our expansion with the new garden on Hutchison (thanks to Oxford Apartments for their collaboration) has allowed us to greatly increase our yields and outreach. We shared over 100 pounds of harvest, hosted over 10 workshops, held two tours with local summer camps and elementary schools, and engaged over 60 volunteers in the garden space.



Contact:
talya.hope@solidarityeconomy.ca



This year we will be continuing to develop the two gardens (and potentially more). Anyone is free to join us to learn about building a garden from scratch, building trellises, soil and composting, pest management, ecological agriculture, and more! As it is our second year cultivating these spaces, we are sure to have even more abundant harvests and community-based gardening days to come. You are welcome to **join us for gardening workshops and collective gardening every Saturday 1-3pm, starting Saturday, April 1st.**



FOOD BANK

BY JEFF HELBERG AND DIMITRI OK

The Milton-Parc Food Bank's weekly food distribution is every Friday 6-7:30pm at the Lutheran Church. With the pandemic and rising food costs, this past year saw us add an extra 30-40 meals and food boxes to around 80-100 per week. The wonderful Toni Caserta greatly helped in coordinating the cooking and in leading cooking classes, an initiative we will continue. As a fun and creative way to fundraise, Dimitri Ok, who is also a DJ, has organized 10 concerts of experimental and rave music, including with international musicians, and 3 vintage clothing and art sales.



This year, we are applying for new grants and we intend to apply for charity status which would allow us to write tax receipts for donations. We also seek to organize more community building activities like bingo nights, Sunday brunch with games, and concerts with music for all ages. We are also consolidating our partnerships with other neighborhood organizations, including with the new Coop Bar Milton-Parc in order to operate an affordable meal programme (from 2-5 times per week).

We always need more volunteers to help cook or distribute food, so get involved! New recipients are also always welcome to receive food, and we never ask for identification or proof of need. **Contact us: mpfoodbank@gmail.com; (514) 655-7714 (Dimitri Ok).**



B A R M I L T O N P A R C

BY SALVATORE MOSCATO

*We are helping create a
solidarity co-operative bar*

The BMP Coop has taken off in the last 12 months! The space has hosted almost 20 events such as housing coop general assemblies, film shoots, parties, environmental events, and union organizing.

We have also started a soft opening, with opening hours on Wednesdays 4–9pm which we will add onto. With major redesigns and renovations of the space planned for this summer, we are excited to see the space transform. Upcoming plans include modernizing and expanding our kitchen, expanding our bathrooms and including universal accessibility, bringing the space up to code, and adding soundproofing so we can co-exist with our neighbors as pleasantly as possible. We have also opened a [renaming process](#).

Our team is currently working hard on fundraising and grant-writing as well as recruiting volunteers and staff onto the team (especially for managerial roles). We would love to welcome anyone willing to join us in this critical part of the process. You can buy a user-membership, book an event, or get involved with our team by visiting bmp.coop!

[Click here for the presentation about the project!](#)





HOUSING & URBAN DEVELOPMENT

HÔTEL-DIEU HOSPITAL

BY DIMITRI ROUSSOPOULOS

For a decade, we have been arguing that the Hôtel-Dieu Hospital should not be privatized but used to provide essential services such as health care, housing, community services, culture, and urban agriculture. We co-founded the Communauté Saint-Urbain (CSU), a coalition of 60 community groups from Montreal (and especially in the Plateau). Recently, we mobilized a 100 people to come to a public assembly with candidates in the provincial elections (photo above).

Finally, a breakthrough has taken place. The director of the CHUM has created a coalition between the CSU, UdeM's Faculty of Medicine and Faculty of Social Work, and the CIUSSS du Centre-Sud-de-l'Île-de-Montréal to establish, by 2024, a community medical clinic for Milton-Parc and the surrounding area on 2-3 floors of Pavillon Jeane-Mance of the hospital. A community health clinic was one of our original demands years ago. The CSU has agreed to support this project, and in return have support for developing social housing.

ROYAL VICTORIA HOSPITAL

BY NATHAN MCDONNELL



In late 2019, we cofounded the Royal Vic for the Public coalition to ensure that the site serves the common good and remains in the public domain or under community control. We consulted over 300 people and 60 groups, produced a 34 page report, videos, and an open letter, organized marches, and participated in the public consultations by the OCPM.

We have also acted in solidarity with the Mohawk Mothers (Kahnistensera), who are demanding that traditional caretakers authorize any projects on the site of the Royal Vic. They have expressed concerns around possible unmarked graves of Indigenous children on the site and they want the site to house Indigenous homeless people.

SLAM: TENANTS' UNION

BY CHLOE



Le Syndicat des Locataires Autonomes de Montréal-Montreal Autonomous Tenants' Union (SLAM) is a tenants union that focuses on building a movement of tenant power, based on strong relationships among neighbours and using direct action to pressure landlords into lowering rents, doing repairs and maintenance, and to prevent evictions. SLAM works to challenge the system of for-profit housing, and struggles towards the decommodification of all housing, emphasizing the importance of co-operative and non-profit housing.

In the past year, SLAM has supported the unionization of several buildings across Montreal, winning direct financial reparations and repairs for dozens of tenants, supporting 14 tenants resist renoviction, garnering popular support to delay the eviction of another tenant, and mobilizing the city against the eviction of a survival encampment of unhoused comrades. Through doorknocking, community bbqs, film screenings, popular education campaigns and presentations, protests and demonstrations, SLAM is building community and supporting the fundamental right to housing.

Contact SLAM at slam.matu@protonmail.com, or at [@slam.matu](https://www.instagram.com/slam.matu) on Instagram.

VIDEOS OF SLAM IN ACTION:

- 🔗 [Nov. 10 Ville Marie encampment eviction protest](#)
- 🔗 [Cromwell banner drop at 3605 rue Saint Urbain](#)
- 🔗 [Feb. 27 Ville Marie encampment eviction protest](#)

During the pandemic, homelessness doubled. Meanwhile, shelters were reduced to half capacity due to social distancing measures. So the pandemic effectively quadrupled the need! In our neighbourhood, citizens (both housed and unhoused) are suffering and are being ignored by the government, especially the CAQ provincial government, which is neglecting to address the crisis.

We need government action to prevent homelessness by acting on the root causes: the crises of housing, the economy, indigenous disempowerment, youth disempowerment, mental health, and domestic violence.

To help homeless people find stability, we need massive investment in housing and intervention services, but spread throughout the City and the North, so it's not too heavy for Milton Parc. These past 2 years have seen some new developments: the opening of a shelter in Hôtel-Dieu and another in a hotel on St Dominique; the purchase of a hotel in the Mile End and another property on St Hubert for indigenous housing; and many other organizations' new housing programmes.

We need better cohabitation resources, including a constant street presence of intervention and mediation workers in Milton Parc, to support residents and businesses in addressing crime, noise, mess, blockage of public walkways and door entrances, etc. The Ombudsman's report "Don't look the other away" exposed these issues very publicly, an important result of the work of the Collectif des Résidents.



The City, the SPVM, and different intervention organizations installed the $E=mc^2$ container at Milton/Parc, but it was unfortunately understaffed. The borough created the Comité de Bon Voisinage, that is unfortunately too restrictive in citizen consultation. Also, the CMP has created a Committee for Security, Cleanliness, and Crime with members on the corner.

Over the past year, we have been :

Advocating for holistic, systemic solutions. See our [2020 report](#) and our 36-page policy brief on [Homelessness and Indigenous Housing](#).

Direct aid: we've helped provide food, clothing, and other supplies with Samedis Solidaires (meals every Saturday at 11am), [Montreal Solidarity Supply](#), and [Mobilizing for Milton Parc](#). Welcome to volunteer.

Community building: We have organized educational and cultural events with Indigenous artists, the CCA, and other partners to allow indigenous artists to share their culture with residents.

Comm-Un: we have been incubating Comm-Un, founded by Jonathan Lebire, with 20 years of experience in indigenous homelessness, after himself being homeless for 5 years. (See next page.)

Comm-Un works to empower all citizens, especially those experiencing homelessness, to form an inclusive, caring community that brings dignity to all its members. Through the support of the CCMP, Comm-Un has been welcomed into the Milton-Parc family. We have created an action plan, incorporated as a non-profit, created a shared office for frontline workers, and created a network of citizens, intervention workers, artists, nuns, and social entrepreneurs. We have a daily presence on the street, and have started working with the SDC to support local shop owners at Milton / Parc.

Biggest of all, we are about to open a day centre! In collaboration with the Lucia Kowaluk Foundation, it will offer art, exhibitions, discussions, and personal development from the church at the corner of Papineau / Rachel. We've also organized art activities, discussions, museum excursions, social insertion placements, and are creating an indigenous art co-operative to produce and sell art.

Our work has mobilized about 50 volunteers and we always welcome more! Come join the fun! **commun.jonathan@gmail.com**

It takes a village to bring someone out of homelessness



RENEWING THE CCMP

DAY OF REFLECTION

BY NATHAN MCDONNELL

Our day of reflection was a big success! 40 participants of all ages shared their vision for the CCMP and perspective on what we should focus on. There was particular interest in how we can attract engaged citizens to the CCMP, reconnect to neighbourhood priorities, and work together on homelessness (as complex and controversial as it is). There were lots of fresh ideas such as:

- **Community outreach to residents** through personal invitation and door-to-door
- **Cultivating community connections** through events at 3516 Parc, the bar, Parc Lucia Kowaluk
- **Improving communications** through a collective calendar, a directory of local initiatives, la Lucarne, and our website
- **Facilitate meetings** between key organizations (CCMP, CMP, ARMP, SDC, etc).



ADVISORY BOARD

BY DIMITRI ROUSSOPOULOS

We are putting together an advisory board to honor our elders and have their wisdom and experience guide our renewal and community building initiatives. This group will be consulted on occasion or when needed.

To date, 7 people have agreed to be members of the committee: **Susan Read, Leo Buckles, Wayne Wood, Dimitri Roussopoulos, Jean-Jacques Chicone, Cindy Cook, and Clank.** Collectively, they have a combined experience of 250 years in community development in Milton Parc and beyond. Please contact us if you would like to be involved.

Contact: dr@democracite.net



FINANCES

See our 2022 [Treasury report](#).

This year especially saw the development of our coworking and community centre at 3516 Parc, which has led to a regular source of revenue that we can redistribute into neighbourhood projects.

See [our proposed budget for 2023-25](#).

Revenus	2021		2022			2023 Projections		
Classifications	Revenus	%	Revenus	%	+/-	Revenus	%	+/-
Subventions salariales	29 499,77	19%	34 983,35	15%	19%	31 000,00	11%	-11%
Subventions	123 785,29	79%	131 852,10	57%	7%	130 000,00	47%	-1%
Revenues Operationnelles	250,00	0%	27 131,85	12%	10753%	60 000,00	22%	121%
Adhésions et dons privées	3 212,12	2%	705,00	0%	-78%	4 000,00	1%	467%
Autres revenus	181,28	0%	1 814,32	1%	901%	200,00	0%	-89%
Balance de l'année précédente	-771,89	0%	35 399,18	15%	-4686%	49 982,24	18%	41%
TOTAL REVENUS CCMP	156 156,57	100%	231 885,80	100%	48%	275 182,24	100%	19%
Dépenses	2021		2022			2023 Projections		
Classifications	Dépenses	%	Dépenses	%	+/-	Dépenses	%	+/-
Salaires	73 444,65	37%	71 403,82	39%	-3%	73 000,00	41%	2%
Services Professionels	9 207,45	5%	14 038,39	8%	52%	15 450,00	9%	10%
Locaux	4 899,84	2%	47 156,69	26%	862%	40 000,00	23%	3976%
Nourriture	23 903,21	12%	19 940,56	11%	-17%	15 000,00	8%	-68%
Agriculture urbain	3 827,51	2%	13 465,99	7%	252%	15 000,00	8%	11%
Transport	1 524,53	1%	1 707,38	1%	12%	1 758,60	1%	3%
Communications	3 479,93	2%	981,41	1%	-72%	2 441,67	1%	3%
Papeterie	951,44	0%		0%	-100%	0,00	0%	#DIV/0!
Vêtements	5 250,00	3%	896,00	0%	-83%		0%	
Transferts inter-departement	71 217,51	35%	9 907,77	5%	-86%	10 000,00	6%	1%
Frais administratifs	3 087,94	2%	2 370,55	1%	-23%	4 000,00	2%	69%
Autres	50,00	0%	35,00	0%	-30%	100,00	0%	186%
TOTAL DÉPENSES CCMP	200 844,01	100%	181 903,56	100%	-9%	176 750,27	100%	-3%
BALANCE	-44 687,44		49 982,24		-212%	98 431,97		97%

PARTICIPATION

MEMBERSHIP



The CCMP has **almost 200 supporters. Become a CCMP member and support our work!** Our membership fees:

For individuals: \$10/year, \$20/3 years, or \$100 lifetime,

For organizations: \$100/year.

Membership fees can be paid by: PayPal, Interac, cheque, or cash. [Click here for more information.](#)

CONTACT US



Get involved in your community! Come say hi at 3516 Parc, or contact us: 514-561-4656, ccmp.miltonparc@gmail.com.

Our [website](#), [Facebook Page](#), and [Facebook Group](#). Our monthly board meetings are open to all of our members.

OUR PARTNERSHIPS



The CCMP incubates the Food Bank, Bar Milton Parc, Comm-Un, and SLAM. We are co-founders of the coalitions the Communauté Saint Urbain, the Royal Vic for the Public Coalition, Prenons la Ville, À Nous les Quartiers, and À Nous le Plateau. We are members of CDC Plateau and TROVEP and are supported by PME Montréal and the CIUSSS du Centre-Ouest-de-l'Île-de-Montréal. We also collaborate with the Milton Parc Community (CMP), SDC Milton Parc, the Recreation Association of Milton Parc (ARMP), the Students' Society of McGill University (SSMU), the Lutheran Church, Santropol Roulant, the Comité logement du Plateau, the Yellow Door, the Table de Quartier Peter McGill, SEIZE, Plein Milieu, Exeko, ISWP, Montreal Solidarity Supply, Samedis solidaires, Mobilizing for Milton Parc, Value Collective, the CCA, the McCord Museum, and Sentier Urbain. Our tenants are Tenk.ca, les Mille Lieux, QPIRG McGill, Comm-Un, ACORN, the Centre for Collective Action, Kata Éditeur, and Mama Dances.

[illegible]

MERCI THANK YOU!



WWW.CCMP-MPCC.COM/



COMITÉ DES CITOYEN(NE)S
MILTON-PARC
CITIZENS' COMMITTEE